



**BÖHM**  
**PLAST-TECHNIK**

COMPANY PRESENTATION





# WHERE TO FIND US



## Address:

Březová 2054  
Česká Třebová  
560 02  
Czech Republic



# COMPANY OVERVIEW



Founded in **1991**



**200** employees



We specialize in **injection molding** and thermoplastic **plating** including assembly



We have all necessary certificates



Turnover in 2024: **14 mio. EUR**

## Main activities:

Production of plastic parts for automotive, electrotechnics, telecommunication industry and metallization of them.

## Additional activities:

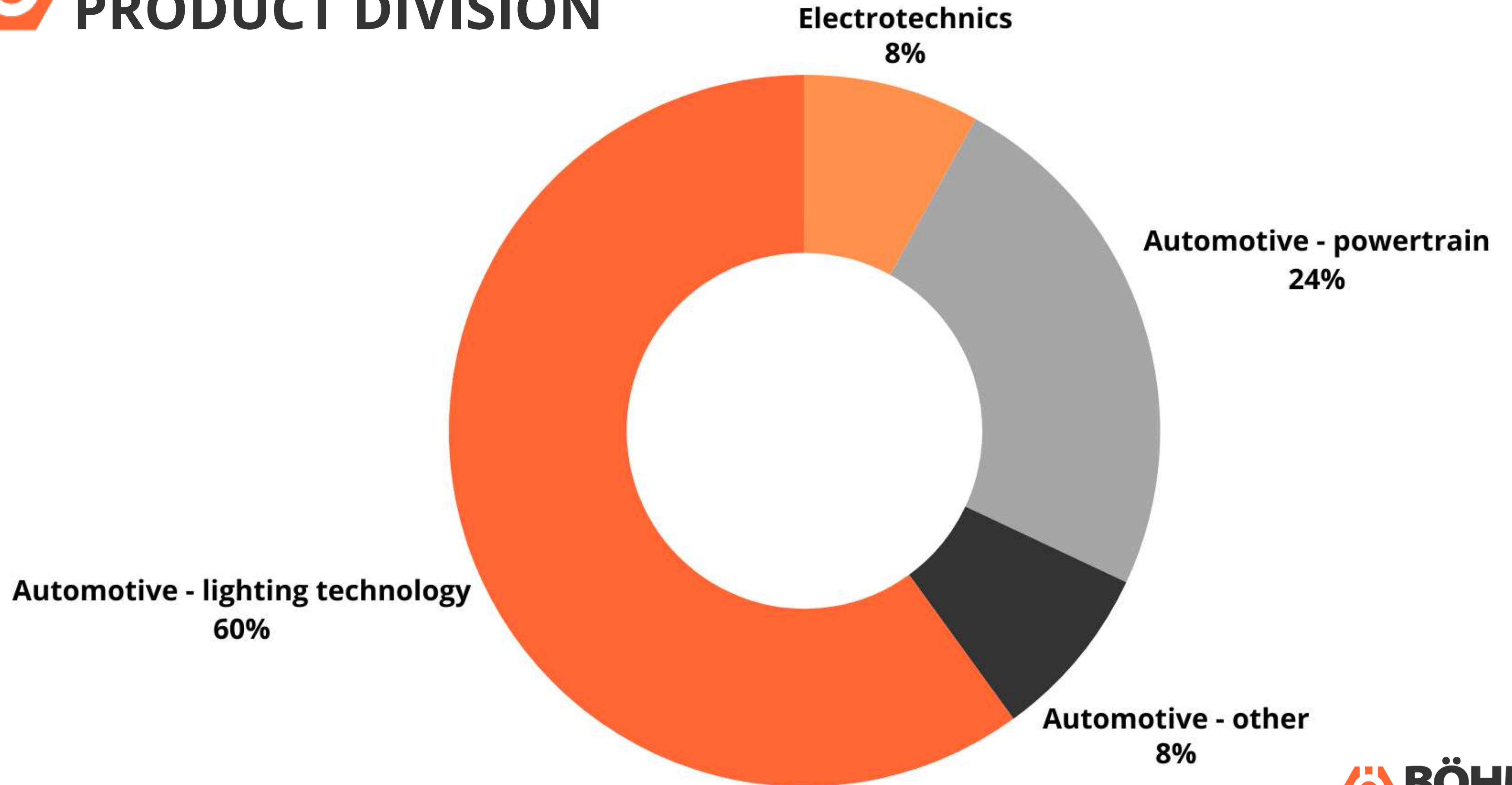
Assembly, ultrasonic welding, bonding, possibility of external painting of parts, external development and construction of moulds.







# PRODUCT DIVISION



# CERTIFICATION

BÖHM PLAST-TECHNIK has all the necessary **certificates**:

- ISO 14001:2015
- ISO 50001:2018
- EN ISO 9001:2015
- IATF 16949:2016
- TISAX Level 3







# SOCIAL RESPONSIBILITY POLICY

## HUMAN RIGHTS

- We support and tolerate internationally recognised human rights
- We reject any complicity in human rights abuses

## CONDITIONS OF WORK

- We recognize the right of workers to assemble and their right to collective bargaining
- We eliminate all forms of forced labor
- Avoid child labor
- Eliminate all discrimination in employment

## ANTI-CORRUPTION MEASURES

- We reject corruption in all its forms, including bribes and extortion





# EIGHT PRINCIPLES OF SUSTAINABILITY

## 1. WASTE MINIMIZATION

Implement procedures for recycling and reusing materials.

## 2. EFFICIENT USE OF RESOURCES

Reduce the consumption of water, energy, and other raw materials.

## 3. EMISSION REDUCTION

Implement cleaner technologies and reduce carbon footprint.

## 4. PRODUCT RESPONSIBILITY

Design and develop products that are long-lasting and recyclable.

## 5. EMPLOYEE ENGAGEMENT

Educate and motivate employees towards sustainable work practices.

## 6. ETHICAL BEHAVIOR

Adhere to the highest ethical standards in all business areas.

## 7. TRANSPARENCY

Communicate openly about sustainability goals and outcomes to the public.

## 8. INNOVATION

Invest in research and development for more sustainable technologies and processes.



# TECHNOLOGICAL EQUIPMENT



# PRESS SHOP

BÖHM PLAST-TECHNIK has **17 injection molding machines** from various world brands, such as ENGEL and SUMITOMO DEMAG with **clamping force from 120t to 1500t**:

- SUMITOMO DEMAG 120t
- SUMITOMO DEMAG 210t
- ENGEL 300t – 3x
- SUMITOMO DEMAG 350t
- ENGEL 400t – 3x
- ENGEL 500t
- ENGEL 600t
- ENGEL 700t – 3x
- ENGEL 1300t
- ENGEL 1500t
- SUMITOMO DEMAG 1500t



## **Equipment:**

- Spotting press TUS 160 Reis
- Mobile laser welding 150W
- Internal gas welding Tungsten TIG
- Universal cutter
- CO2 abrasive cleaning unite
- Portal crane 16t and 10t

## **Scope of activities:**

Assembly/disassembly, repair, external mould production, modifications, maintenance according to internal guidelines, service maintenance, spot pressing, polishing, laser welding, adjustment according to BPT standards





# METALLIZATION

BÖHM PLAST-TECHNIK has three **evaporating** and three **sputtering** machines of the ARZUFFI brand.

- ARZUFFI 1800/1800 - 3x
- ARZUFFI COMBIMET II - 3x

We specialize in **chrome**, **black chrome**, **aluminum** and **stainless steel** plating.





# ASSEMBLY

We provide **assembly** of assemblies and sub-assemblies, **ultrasonic welding**, **gluing**, **screwing**, **cutting** and more.





## Equipment:

- Coordinate 3D machine - Zeiss Eclipse
- 3D Scanner - Atos III Triple Scan
- Digital altimeter - TESA 600mm
- Contour Chart
- Roughness Gauge
  - Mahr Mahrsurg PS1
- Plastometer
- Spectrophotometer







# PRODUCTION PROGRAM

- Parts weighing from a few **grams to 5 kg**
- Parts for interior, exterior, headlights, technological products for electronics and other industries
- Viewing parts, PMMA parts, technical parts and light guides
- Decorative and functional plating of plastic parts with **Al, Cr, CrN** and **stainless steel** materials.
- PVD painting of components
- Assembly of components





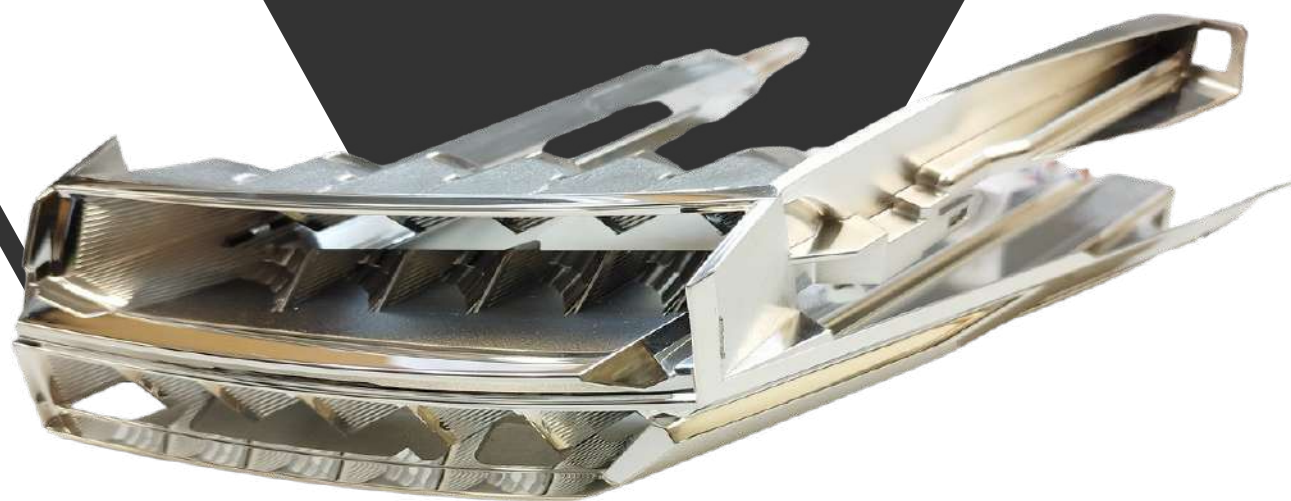
# REFERENCE PARTS





# METALLIZED PARTS

ALUMINUM



CHROME







# GRAINED AND METALLIZED PARTS

ALUMINUM



STAINLESS



CHROME







**MASKED PARTS**

ALUMINUM







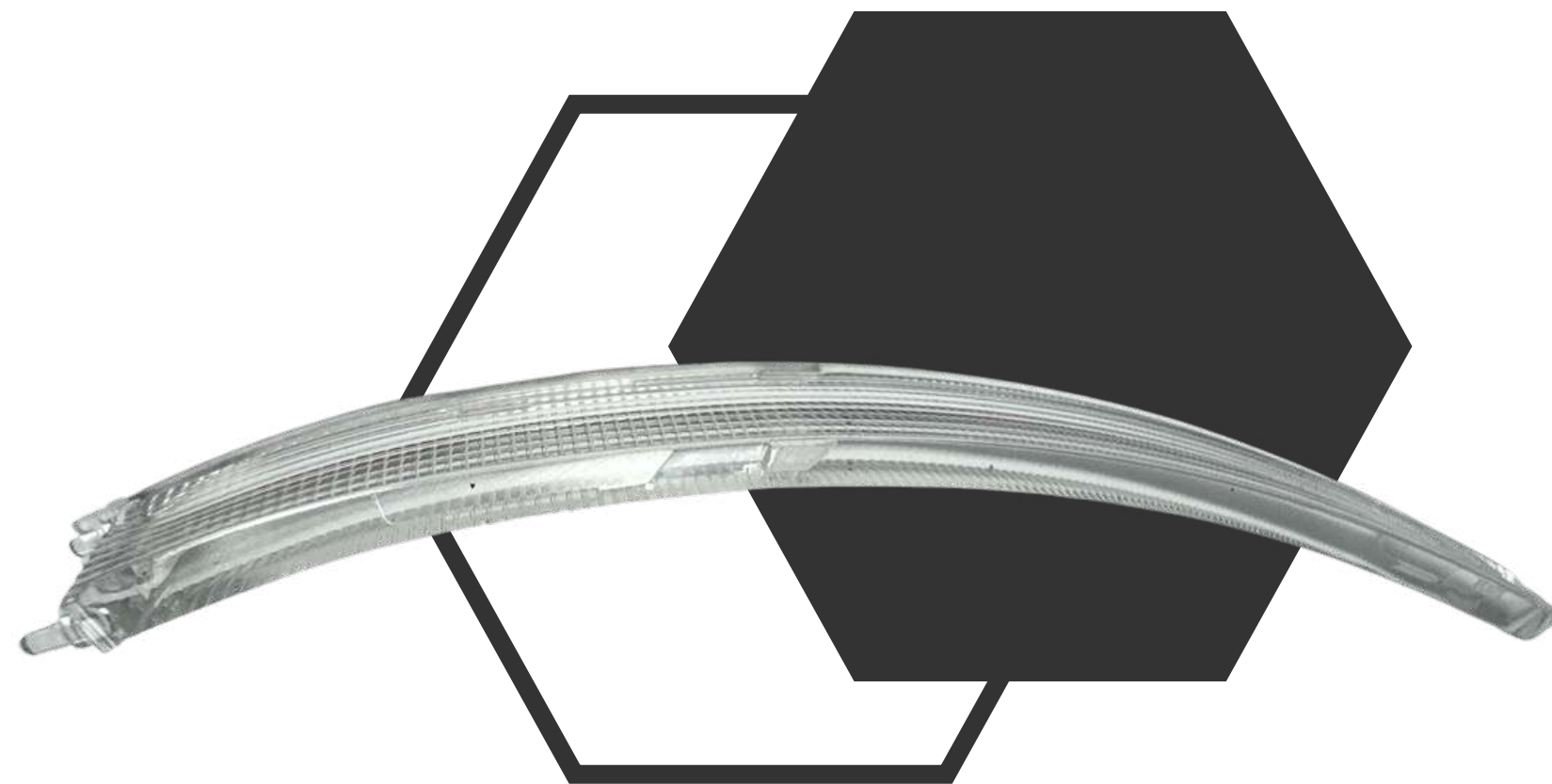
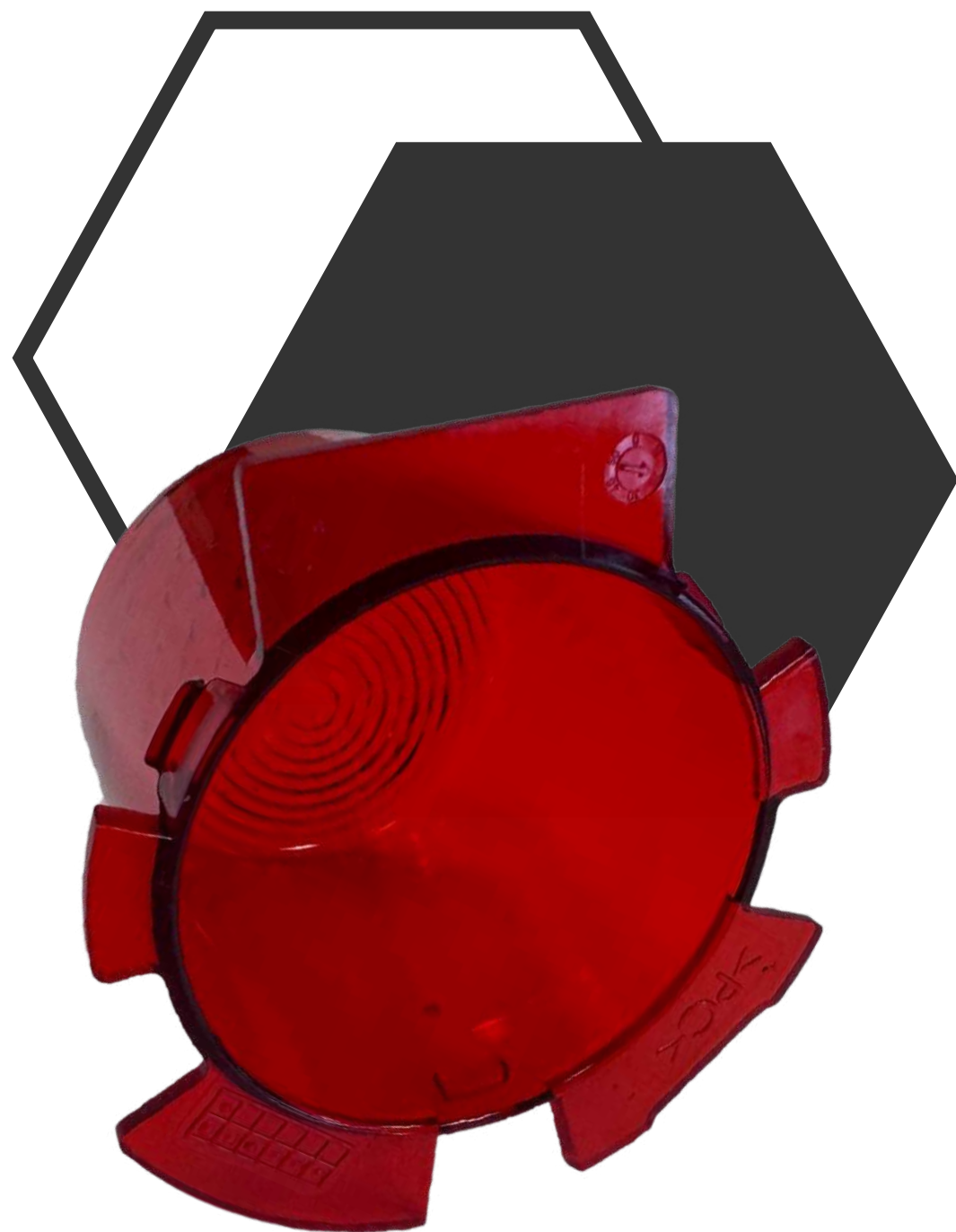
# ASSEMBLED PARTS





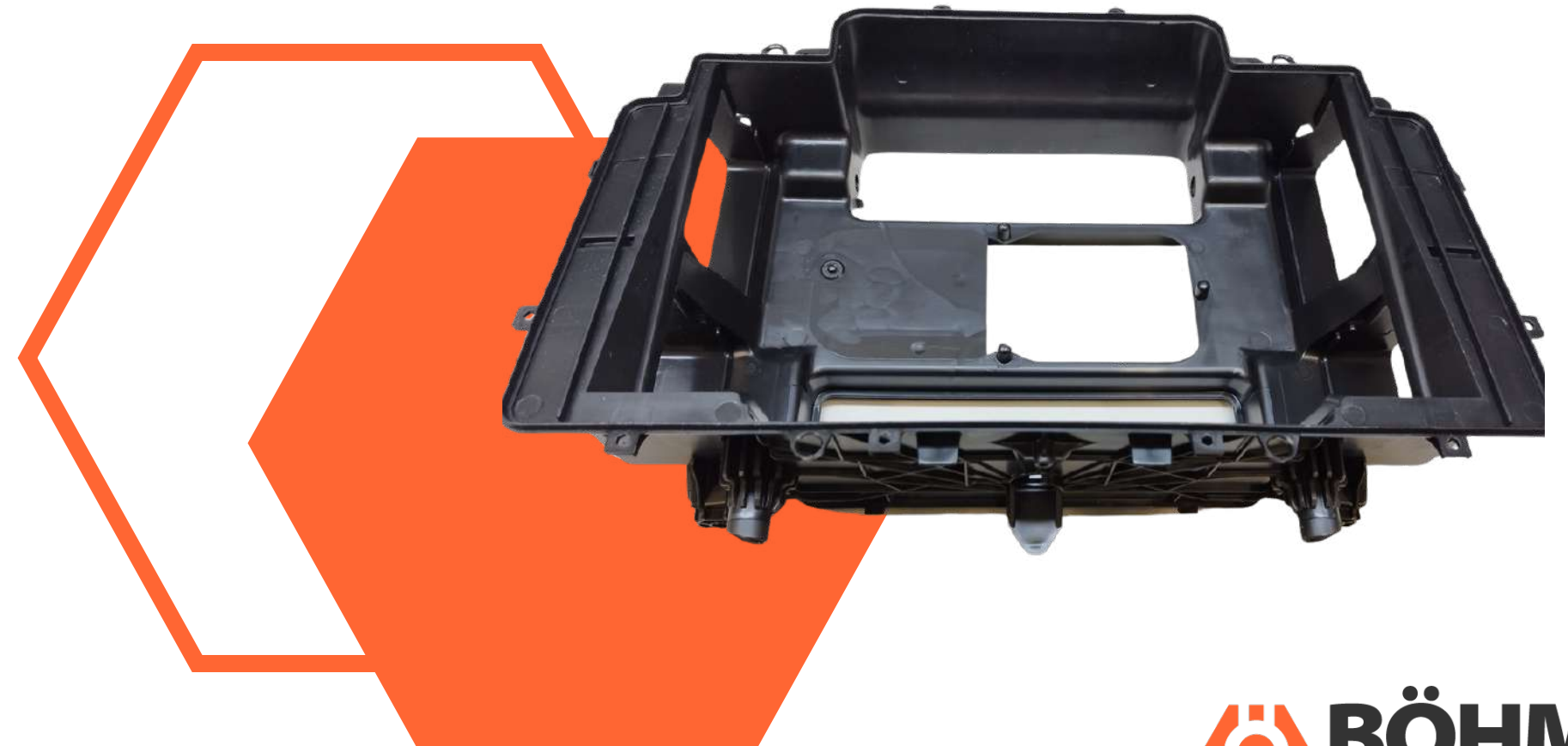
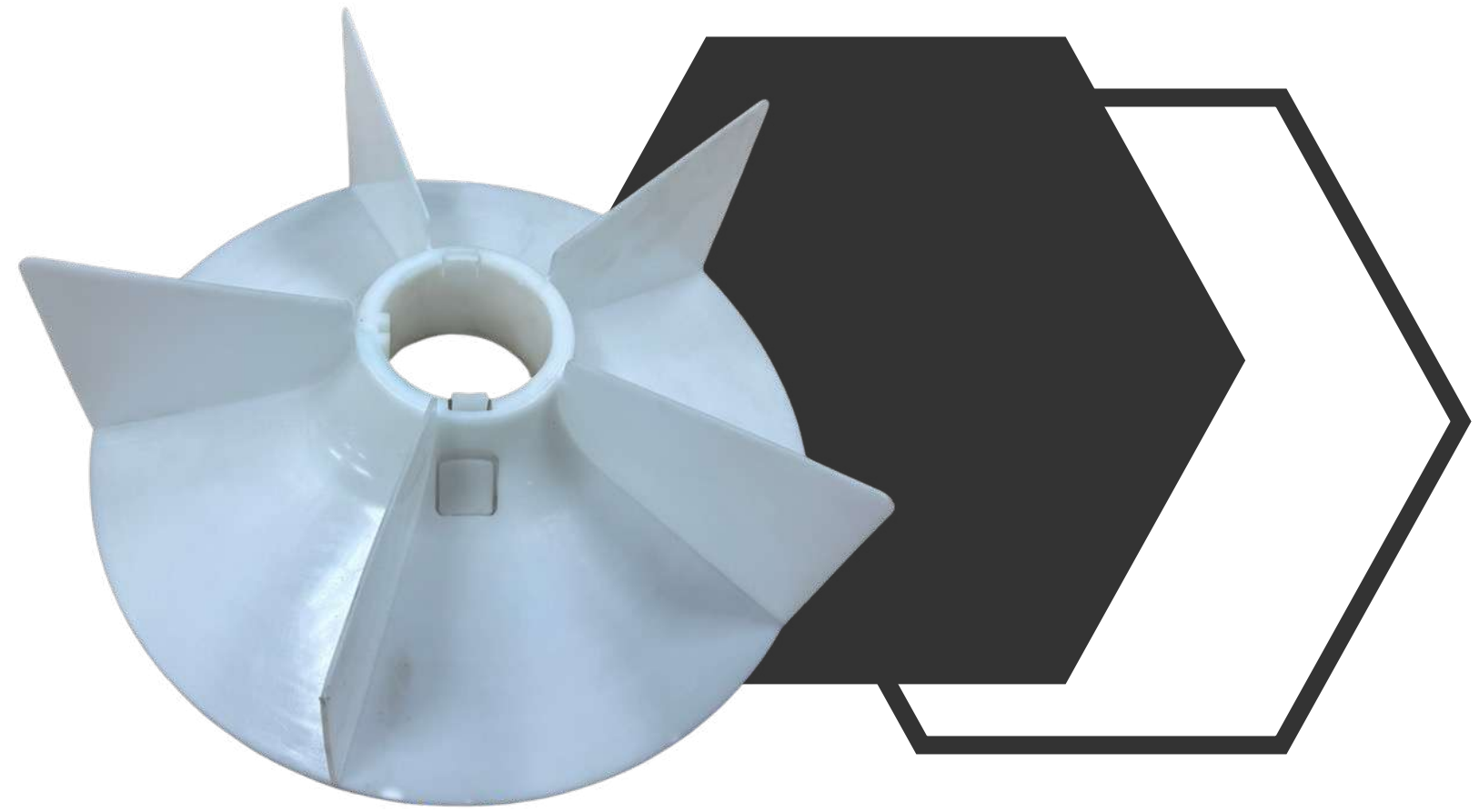


# TRANSPARENT PARTS AND LIGHT GUIDES





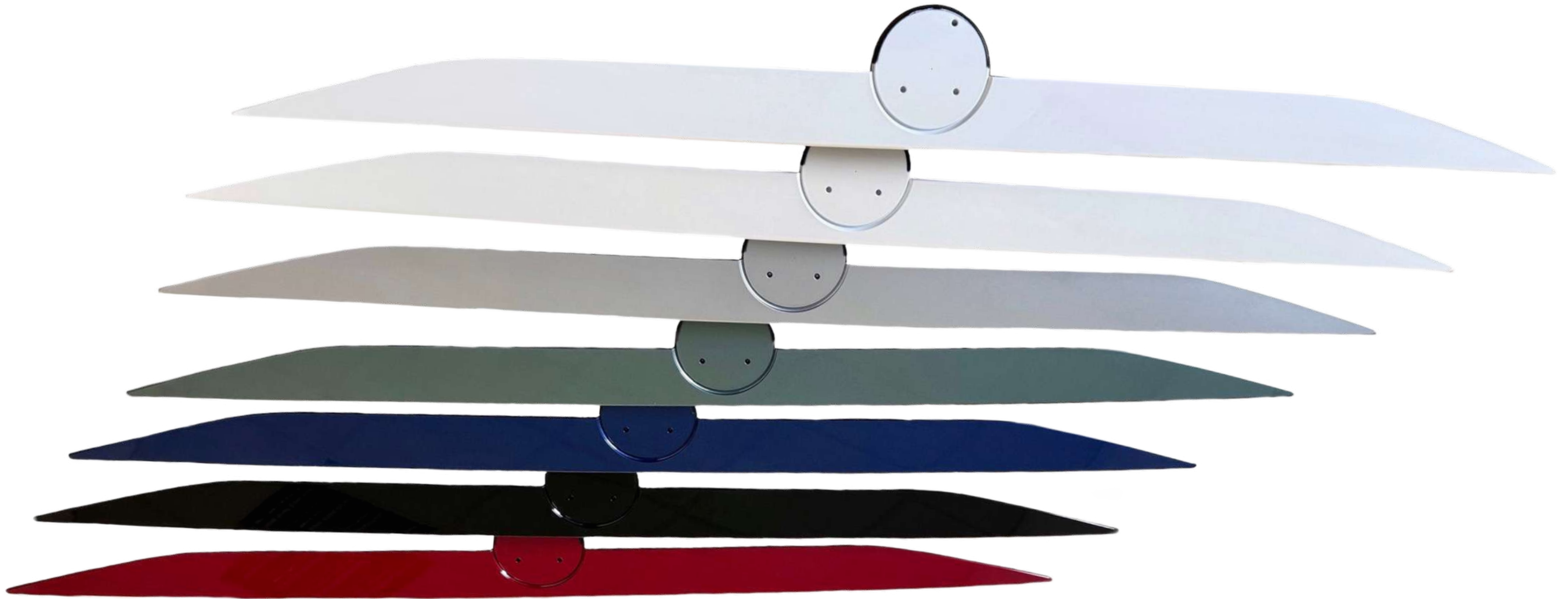
# TECHNICAL PARTS







# PAINTED PARTS







# REFERENCES



**SĘDZISZÓW**  
EFFECTIVE PROTECTION

**RIDEX**

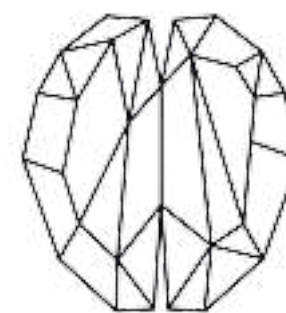


**GRAMMER**



spol. s r. o.

NANOPTIQS



AUTOMOTIVE  
**LIGHTING**

**FORVIA**



**SKODA**

**INNOMOTICS**

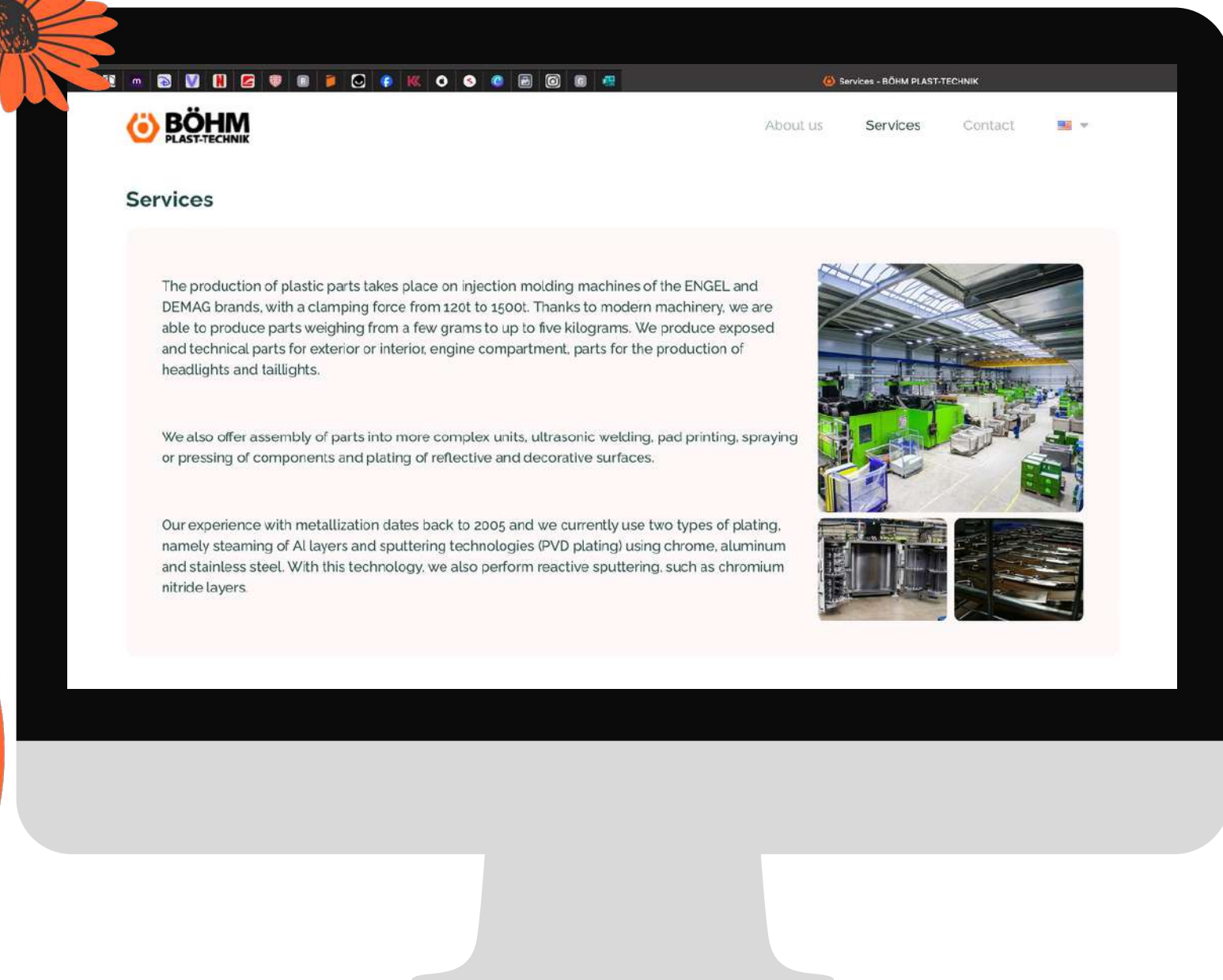
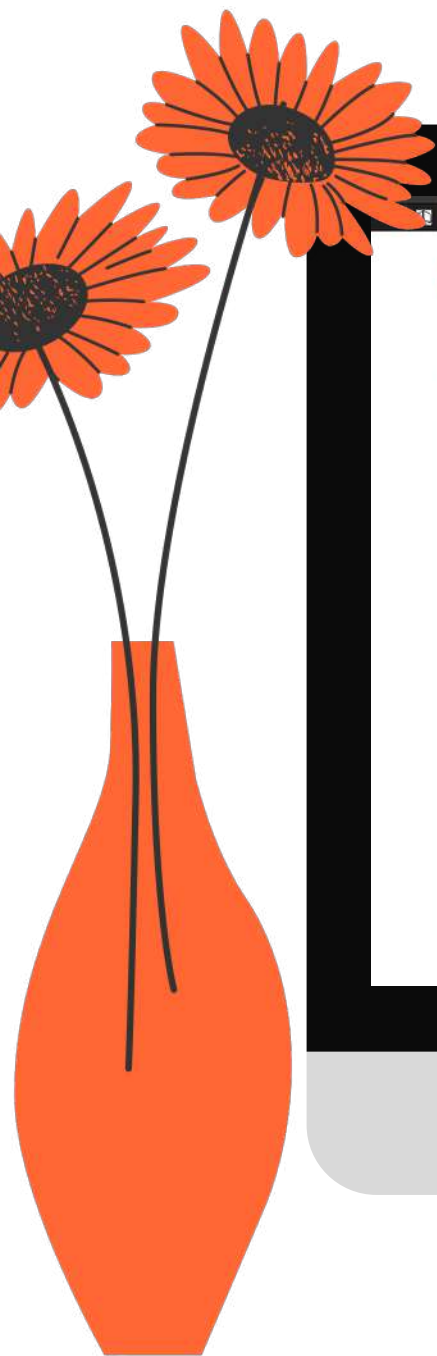
**MAGNA**



**DENSO**



# THANK YOU FOR YOUR ATTENTION



[sales@bohmplast.cz](mailto:sales@bohmplast.cz)



[bohmlast\\_technik](https://www.instagram.com/bohmlast_technik)



[facebook.com/bohmplast](https://facebook.com/bohmplast)



[bohmplast.cz](http://bohmplast.cz)



[+ 420 725 651 199](tel:+420725651199)